

## Standard Products

# UT28F256QLE and UT28F256LVQLE PROMs

## Programming User Guide

October, 2006



### PROM PROGRAMMING FLOW FOR UT28F256QLE and UT28F256LVQLE PROMs

Aeroflex Colorado Springs' new (June 2006) UT28F256QLE and UT28F256LVQLE **do not** require any Post- Program Conditioning. **NOTE:** Many customers have purchased Aeroflex's Legacy PROMs - **DO NOT** use the Post Programming kit that was provided with the Legacy PROMs. The UT28F256QLE and UT28F256LVQLE **will be damaged** if connected to the burn-in stimulus card.

#### Algorithm Download:

Go to [www.bpmicro.com](http://www.bpmicro.com).

Under software select Downloads.

Register and then login

Select BPWIN (approx. 56MB file size)

Install BPWIN

*Note: Software versions 4.61 or higher are approved releases.*

#### Programming:

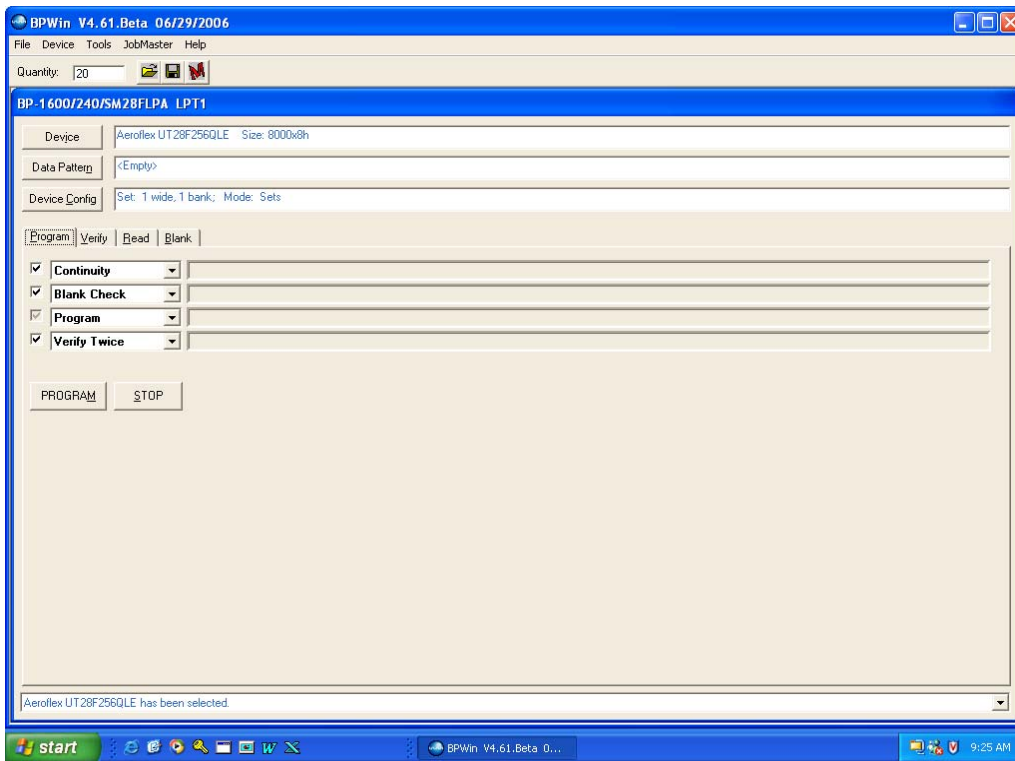
To select a device hit the Device tab below and type in Aeroflex and then highlight the device type you want to program.

To load data pattern hit the Data Pattern tab below.

Use default settings for Device Config. (Set 1 wide, 1 bank; Mode: Sets)

Be sure that Continuity, Blank Check and Verify are checked. Set Verify to Twice.

Hit the PROGRAM tab to start programming the device.



Programming times can vary from 60 to 240 minutes depending on the number of bits that will be programmed. If the device fails verify, discard the part. When programming is complete a security fuse is blown which will disable all test modes used during programming. Trying to program a second block will not work since the test modes have been disabled.

**Table 1: Algorithm Selector**

<b>Aeroflex UT28F256QLE</b> <i>Rev E, 5.0V</i>	<b>Aeroflex UT28F256LVQLE</b> <i>Rev E, 3.3V</i>
UT28F256QLT45UCX	UT28F256LVQLEEC65UCX
UT28F256QLET45UPX	UT28F256LVQLEEC65UPX
UT28F256QLET45UWX	UT28F256LVQLEEC65UWX
5962-9689109QXX	5962-0151704QXX
5962-96891010QXX	5962-0151705QXX
5962-9689109VXX	5962-0151704VXX
5962-968910710VXX	5962-0151705VXX

**NOTE:** The information in bold letters is the actual algorithm name. The information below each algorithm name are the products supported by that algorithm.

Rev. E material is identified by WE30E (3.3V), WE40E (3.3V), WE50E (5.0V), or WE60E (5.0V) on the package lid.

**Socket Module:**

SM28FLPA, used for both UT28F256QLE and UT28F256LVQLE

**Programmers:**

BP-1400 Full Support

BP-1400/84 Full Support

BP-1410 Full Support

BP-1410/84 Full Support

BP-1600 Full Support

BP-1610 Full Support

BP-1700 Full Support

BP-1710 Full Support

BP-2600 Full Support

BP-2610 Full Support

**BP MICROSYSTEMS SALES SUPPORT:**

Web Site: <http://www.bpmicro.com/web/sales.nsf>

Phone: 1-713-688-4600

**BP MICROSYSTEMS TECHNICAL SUPPORT:**

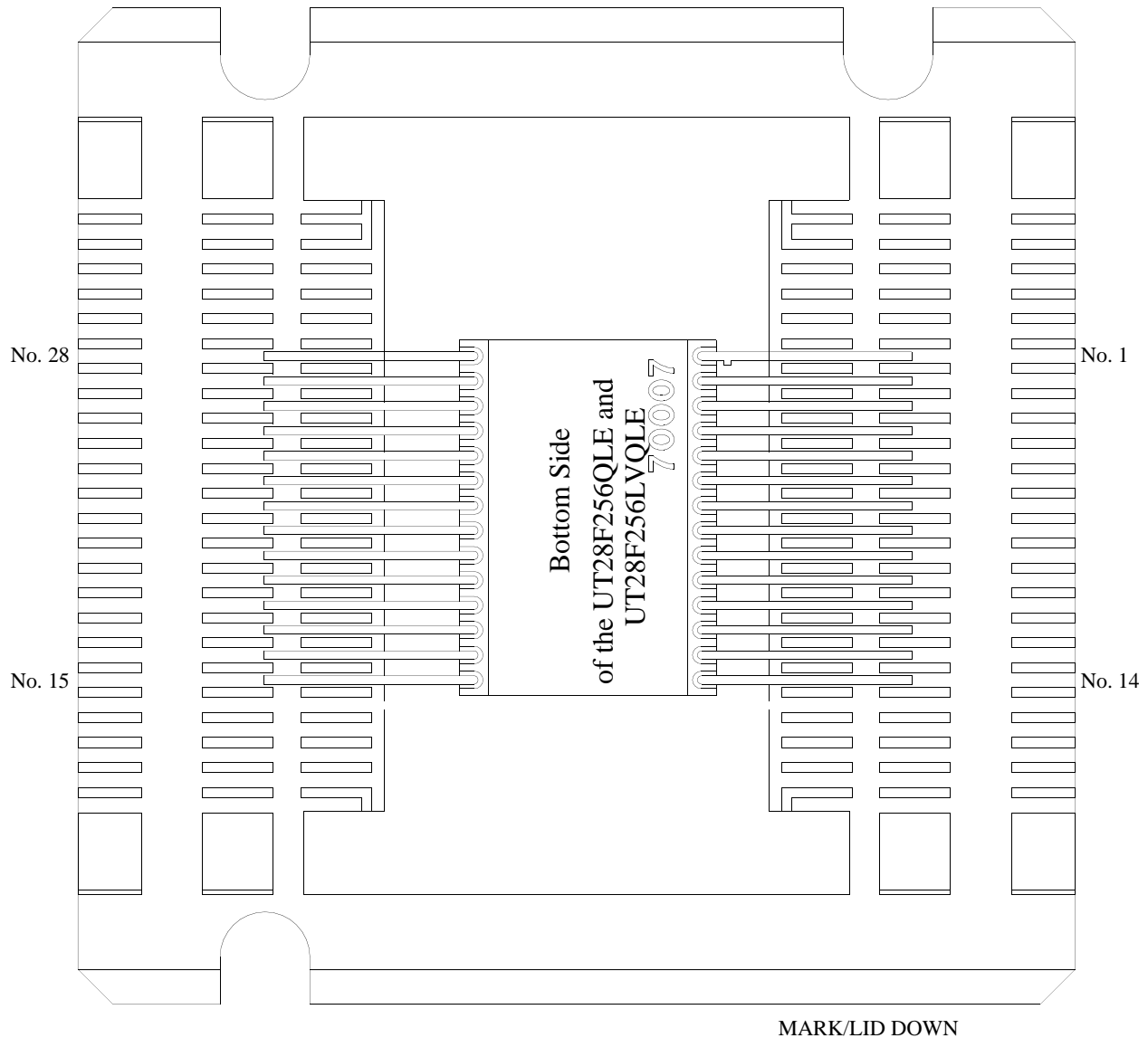
Email: [Tech@BPMicro.com](mailto:Tech@BPMicro.com)

Phone: 1-800-225-2102 (US only)

713-688-4600 (outside the US)

## SYSTEMS TECHNICAL SUPPORT UT28F256QLE and UT28F256LVQLE PROM Alignment within Carrier

The following diagram shows the alignment of the UT28F256QLE and UT28F256LVQLE PROMs within its carrier. It is very important that the PROM is properly aligned in the carrier during programming. If you attempt to program the PROM when it is not properly aligned, the BP Microsystems programmer will fail continuity check.



**Figure 1. Diagram of the UT28F256QLE and UT28F256LVQLE PROM 28-Pin Flat Pack in Carrier**

**COLORADO**

Toll Free: 800-645-8862  
Fax: 719-594-8468

**INTERNATIONAL**

Tel: 805-778-9229  
Fax: 805-778-1980

**NORTHEAST**

Tel: 603-888-3975  
Fax: 603-888-4585

**SE AND MID-ATLANTIC**

Tel: 321-951-4164  
Fax: 321-951-4254

**WEST COAST**

Tel: 949-362-2260  
Fax: 949-362-2266

**CENTRAL**

Tel: 719-594-8017  
Fax: 719-594-8468

*www.aeroflex.com      info-ams@aeroflex.com*

Aeroflex Colorado Springs, Inc., reserves the right to make changes to any products and services herein at any time without notice. Consult Aeroflex or an authorized sales representative to verify that the information in this data sheet is current before using this product. Aeroflex does not assume any responsibility or liability arising out of the application or use of any product or service described herein, except as expressly agreed to in writing by Aeroflex; nor does the purchase, lease, or use of a product or service from Aeroflex convey a license under any patent rights, copyrights, trademark rights, or any other of the intellectual rights of Aeroflex or of third parties.



Our passion for performance is defined by three attributes represented by these three icons: solution-minded, performance-driven and customer-focused