

Standard Products

# UT28F256QL and UT28F256LVQL PROMs

Programming User Guide

June, 2006



## PROM PROGRAMMING FLOW FOR UT28F256QL and UT28F256LVQL PROMs

Aeroflex Colorado Springs' new (June 2005) UT28F256QL and UT28F256LVQL **do not** require any Post- Program Conditioning.

**NOTE:** Many customers have purchased Aeroflex's Legacy PROMs - **DO NOT** use the Post Programming kit that was provided with the Legacy PROMs. The UT28F256QL and UT28F256LVQL **will be damaged** if connected to the burn-in stimulus card.

### Algorithm Download:

Go to [www.bpmicro.com](http://www.bpmicro.com).

Under software select Downloads.

Register and then login

Select BPWIN (approx. 55MB file size).

Install BPWIN

Note: Software versions 4.54 or higher are approved releases for the BP1400, BP1600, BP1700, BP260. Software versions 4.60 or higher are approved releases for the 1410, 1610, 1710, and 2610.

### Programming:

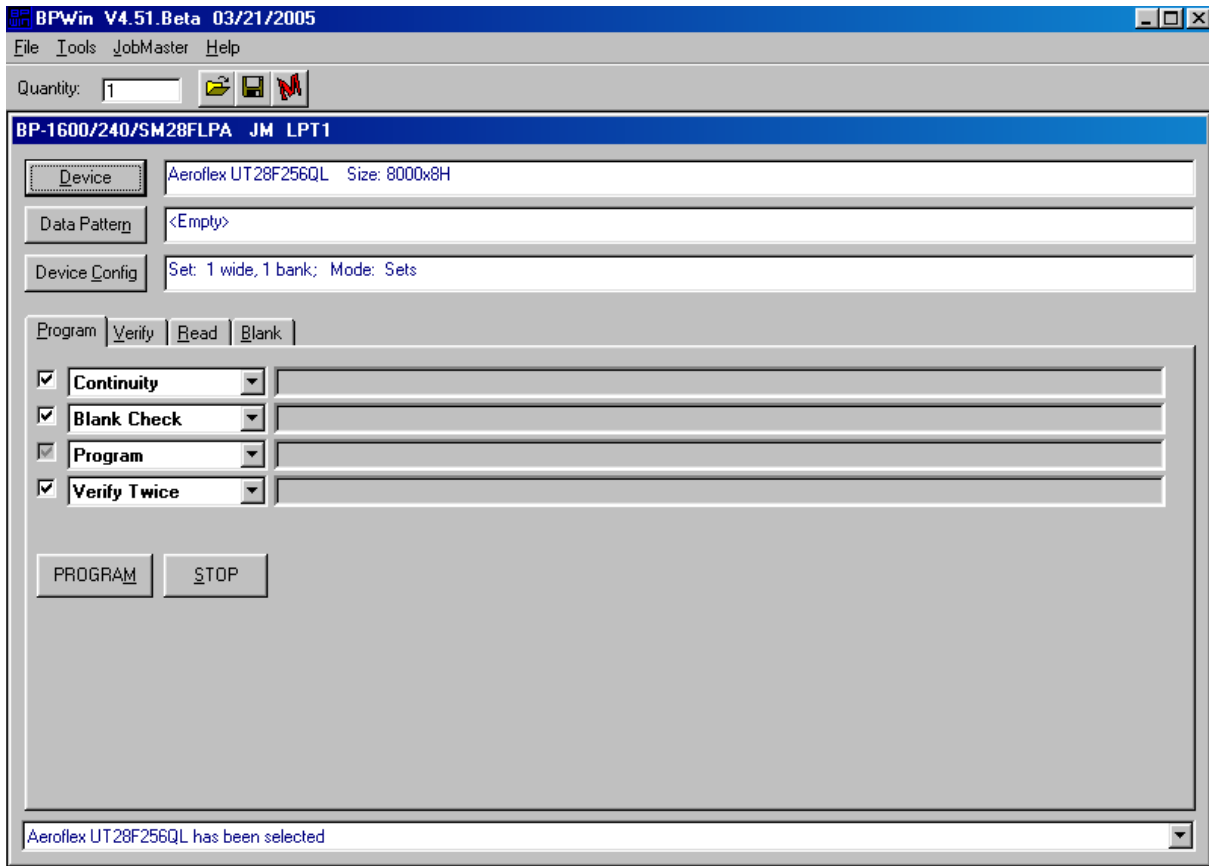
To select a device hit the Device tab below and type in Aeroflex and then highlight the device type you want to program.

To load data pattern hit the Data Pattern tab below.

Use default settings for Device Config. (Set 1 wide, 1 bank; Mode: Sets)

Be sure that Continuity, Blank Check and Verify are checked. Set Verify to Twice.

Hit the PROGRAM tab to start programming the device.



Programming times can vary from 30 to 120 minutes depending on the number of bits that will be programmed. If the device fails verify, discard the part. When programming is complete a security fuse is blown which will disable all test modes used during programming. Trying to program a second block will not work since the test modes have been disabled.

**Table 1: Algorithm Selector**

<b>Aeroflex UT28F256QL Rev C, 5.0V</b>	<b>Aeroflex UT28F256LVQL Rev C, 3.3V</b>	<b>Aeroflex UT28F256QL Rev D Rev D, 5.0V</b>	<b>Aeroflex UT28F256LVQL Rev D Rev D, 3.3V</b>
UT28F256QLT40UCX	UT28F256LVQLC65UCX	UT28F256QLT40UCX	UT28F256LVQLC65UCX
UT28F256QLT45UCX		UT28F256QLT45UCX	UT28F256LVQLC65UPX
		UT28F256QLT40UPX	UT28F256LVQLC65UWX
		UT28F256QLT45UPX	5962-0151702QXX
		UT28F256QLT40UWX	5962-0151703QXX
		UT28F256QLT45UWX	5962-0151702VXX
		5962-9689105QXX	5962-0151703VXX
		5962-9689106QXX	
		5962-9689107QXX	
		5962-9689108QXX	
		5962-9689105VXX	
		5962-9689106VXX	
		5962-9689107VXX	
		5962-9689108VXX	

**NOTE:** The information in bold letters is the actual algorithm name. The information below each algorithm name are the products supported by that algorithm.

Rev. C material is identified by WE40C (3.3V) or WE60C (5.0V) on the package lid.

Rev. D material is identified by WE30D (3.3V), WE40D (3.3V), WE50D (5.0V), or WE60D (5.0V) on the package lid.

**Socket Module:**

SM28FLPA, used for both UT28F256QL and UT28F256LVQL

**Programmers:**

BP-1400 Full Support

BP-1400/84 Full Support

BP-1410 Full Support

BP-1410/84 Full Support

BP-1600 Full Support

BP-1610 Full Support

BP-1700 Full Support

BP-1710 Full Support

BP-2600 Full Support

BP-2610 Full Support

**BP MICROSYSTEMS SALES SUPPORT:**

Web Site: <http://www.bpmicro.com/web/sales.nsf>

Phone: 1-713-688-4600

**BP MICROSYSTEMS TECHNICAL SUPPORT:**

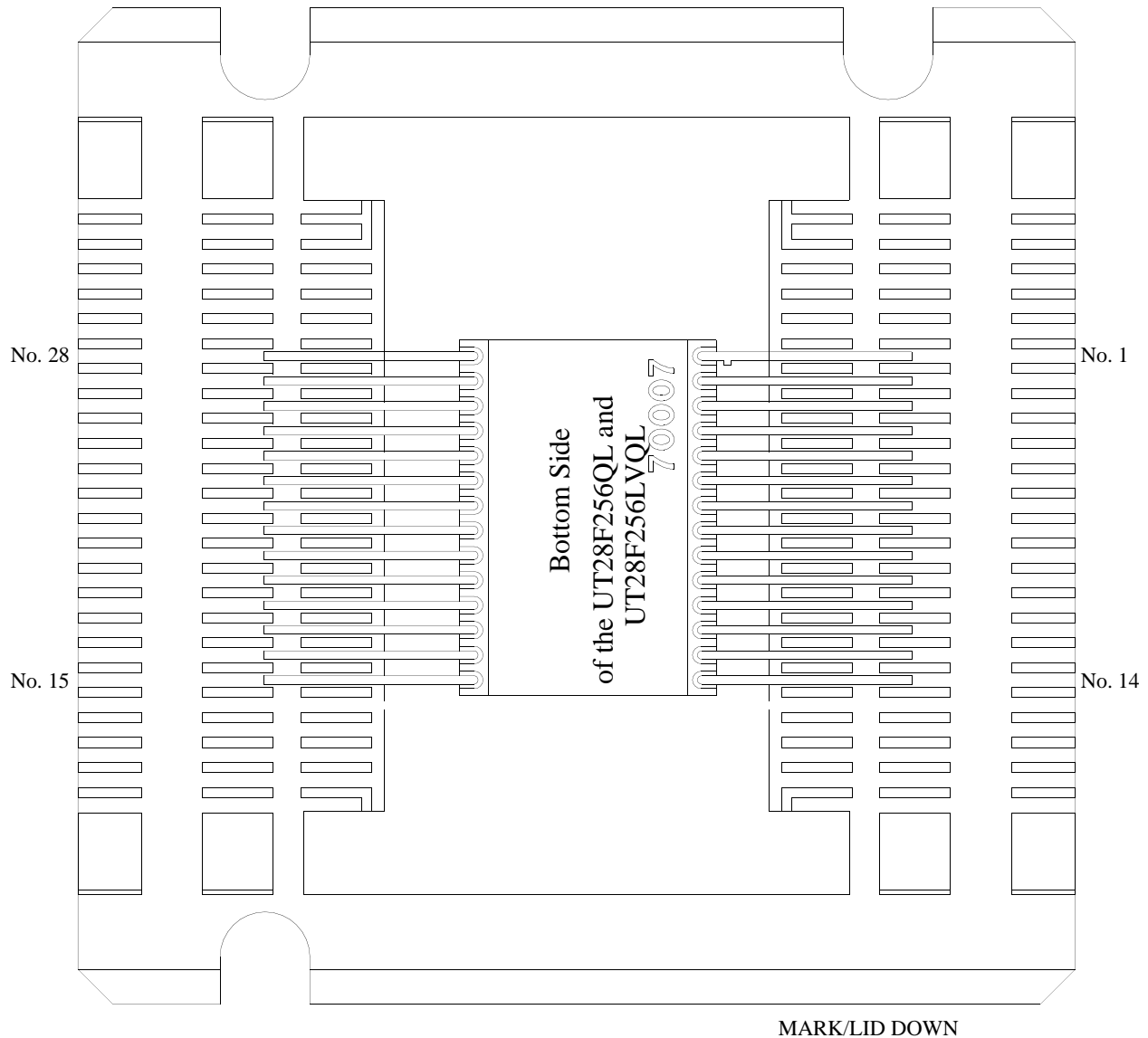
Email: [Tech@BPMicro.com](mailto:Tech@BPMicro.com)

Phone: 1-800-225-2102 (US only)

713-688-4600 (outside the US)

## SYSTEMS TECHNICAL SUPPORT UT28F256QL and UT28F256LVQL PROM Alignment within Carrier

The following diagram shows the alignment of the UT28F256QL and UT28F256LVQL PROMs within its carrier. It is very important that the PROM is properly aligned in the carrier during programming. If you attempt to program the PROM when it is not properly aligned, the BP Microsystems programmer will fail continuity check.



**Figure 1. Diagram of the UT28F256QL and UT28F256LVQL PROM 28-Pin Flat Pack in Carrier**

**COLORADO**

Toll Free: 800-645-8862  
 Fax: 719-594-8468

**INTERNATIONAL**

Tel: 805-778-9229  
 Fax: 805-778-1980

**NORTHEAST**

Tel: 603-888-3975  
 Fax: 603-888-4585

**SE AND MID-ATLANTIC**

Tel: 321-951-4164  
 Fax: 321-951-4254

**WEST COAST**

Tel: 949-362-2260  
 Fax: 949-362-2266

**CENTRAL**

Tel: 719-594-8017  
 Fax: 719-594-8468

[www.aeroflex.com](http://www.aeroflex.com)    [info-ams@aeroflex.com](mailto:info-ams@aeroflex.com)

Aeroflex Colorado Springs, Inc., reserves the right to make changes to any products and services herein at any time without notice. Consult Aeroflex or an authorized sales representative to verify that the information in this data sheet is current before using this product. Aeroflex does not assume any responsibility or liability arising out of the application or use of any product or service described herein, except as expressly agreed to in writing by Aeroflex; nor does the purchase, lease, or use of a product or service from Aeroflex convey a license under any patent rights, copyrights, trademark rights, or any other of the intellectual rights of Aeroflex or of third parties.



Our passion for performance is defined by three attributes represented by these three icons: solution-minded, performance-driven and customer-focused